



A HIGHER STANDARD OF SAFETY®

## USER GUIDE

### Construct-A-SafeGate



Height 29.5" (75 cm)

Maximum Opening 82.7" (210 cm) with included hardware  
Add additional sections to fit any opening

**IMPORTANT:** Qdos wants to keep your children safe and for that we need you to do your part by carefully reading and following the instructions below. Please read through the instructions before starting the installation.

*For installation videos and FAQ go to: [QdosSafety.com](http://QdosSafety.com)*

**IMPORTANT!**

PLEASE READ AND FOLLOW THESE INSTRUCTIONS CAREFULLY AND KEEP FOR FUTURE REFERENCE

When installed according to these instructions and between two strong and rigid surfaces, this gate has been tested to meet or exceed the following Safety Standards, US- ASTM F-1004, Canada- SOR/90-39, and European-EN 1930.

**⚠ WARNING**

- **Children have died or been seriously injured when gates are not securely installed.**
- ALWAYS install and use gate as directed using all required parts.
- Intended for use with children from 6 months up to 24 months of age.
- STOP using when a child can climb over or dislodge the gate.
- NEVER use to keep child away from pool.
- Use only with the locking mechanism securely engaged.
- Regularly check all hardware and do not use if any part of gate is broken or missing.
- This product will not necessarily prevent all accidents. NEVER leave child unattended.
- NEVER step or climb over the gate, always open to pass through.
- For indoor use only.
- Fits openings up to 82.7" (210 cm).
- Never leave the gate unlocked/open as older children may play with the gate and get injured or damage the gate.

**HELP?**

To help you install your gate quickly and easily, please go to [qdossafety.com](http://qdossafety.com) for installation videos and FAQ's to help you succeed. You may also contact our customer service at [support@qdos.zendesk.com](mailto:support@qdos.zendesk.com) or by phone at 800-593-5522.

**MAINTENANCE AND CLEANING**

Check the gate regularly to ensure all the hardware and mountings are tightened. Clean using a mild soap and wipe with a damp cloth.

**WARRANTY**

Your Qdos product is warrantied to be free from manufacturing defects in material or workmanship for a period of 1 year from date of purchase, when used under normal conditions and in compliance with these instructions.

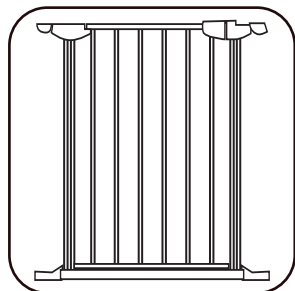
Qdos will either repair, or at its option replace, free of charge, any parts necessary to correct any defect in material or workmanship during the warranty period.

**USE LOCATIONS**

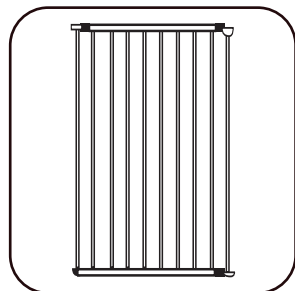
This Construct-A-SafeGate is the "Starter Kit" that can either be used as is or with multiple sections which can be purchased separately and added to provide protection in difficult places like:

- Around bottom of stairs where it is hard or impossible to mount a traditional gate.
- Around 2 staircases with 1 going up and 1 going down.
- Block off wide openings, either inside the opening or in front of the opening, where a traditional gate won't work.
- Around wood stoves, hearths and fireplaces.
- As a freestanding playard when linked to itself and more.

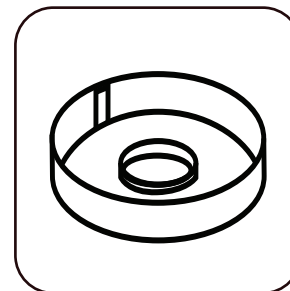
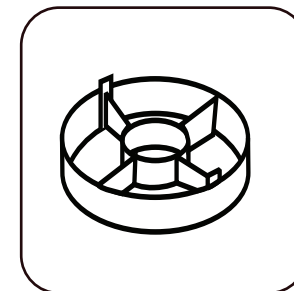
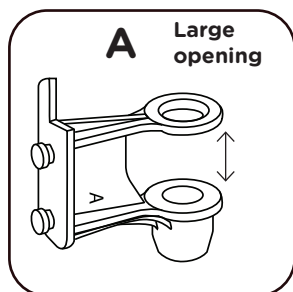
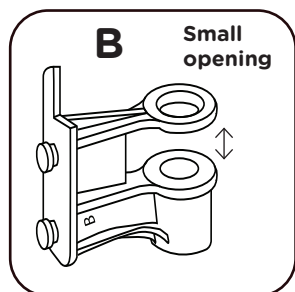
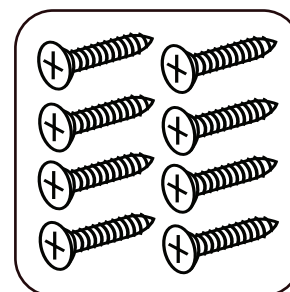
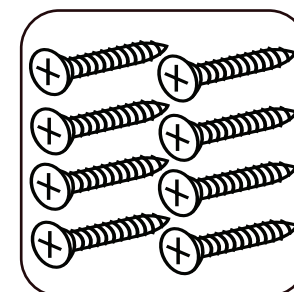
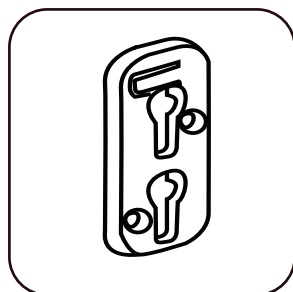
## PARTS LIST:



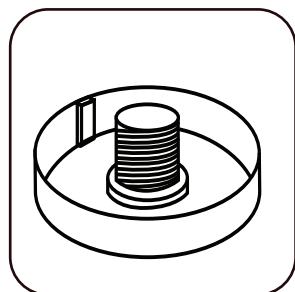
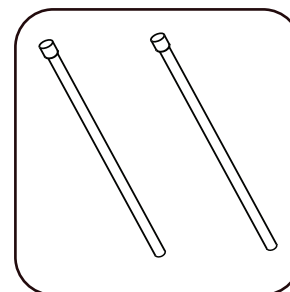
1x Door Section



2 x Long Sections

1x Flat  
Hinge Cover2x Recessed  
Hinge Covers2x Wall Bracket A  
with bigger (1.5"/38 mm)  
opening2x Wall Bracket B  
with smaller (1"/25 mm)  
opening8x Short 3/4" (19 mm)  
Screws8x Long 1.5" (38 mm)  
Screws

4x Wall Plates

1x Flat Hinge Cover with  
threaded post2x Connecting  
Spindles

## IMPORTANT

When installing the gate in front of stairs, place it at least 24" (61 cm) from the top or bottom step. When installed in front of a fireplace place it at least 30" (76.2 cm) away from the fire.

## EXTRA SECTIONS AND DOORS AVAILABLE

Two sizes of additional sections and a door section are available as needed, each sold separately.

Construct-A-SafeGate Short Section- 7.9" (20 cm)

Construct-A-SafeGate Long Section- 23.6" (60 cm)

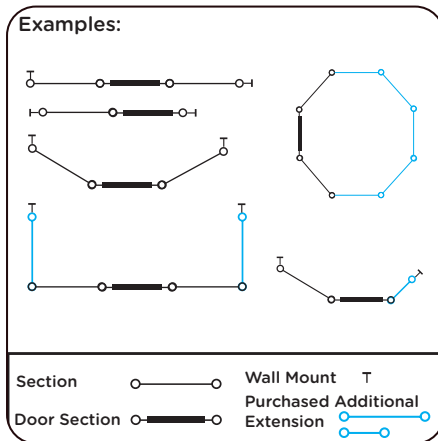
Construct-A-SafeGate Door Section- 31.5" (80 cm)

## ASSEMBLY

### General

The following assembly instructions work for all sections of the Construct-A-SafeGate. They can all be assembled and reassembled in any order to fit the location.

### Step 1

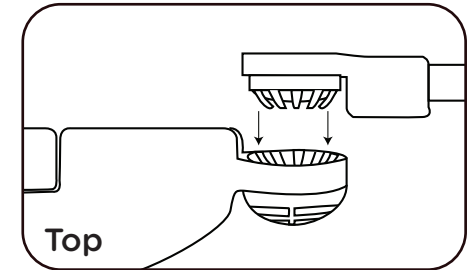
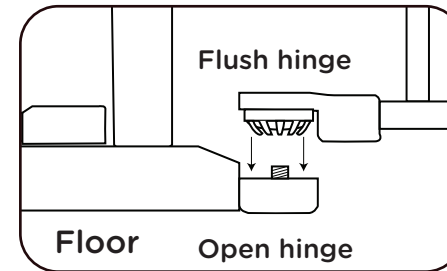


Determine the width of the area you need to protect, and whether or not the "Starter Kit" is enough, or if you need to purchase additional sections.

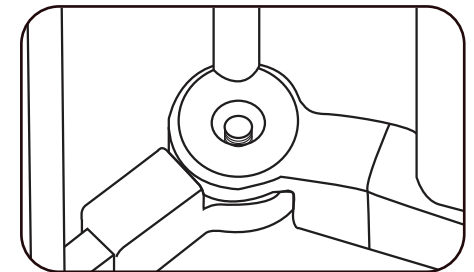
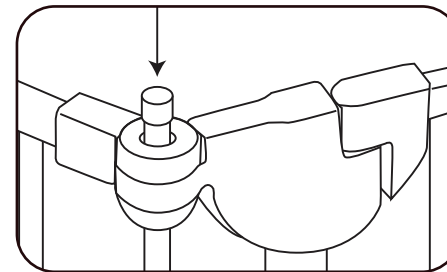
### Step 2

Decide where you want the Door Section located in the gate. Normally it's most convenient to have the door in the center or near the center of the gate span.

### Step 3

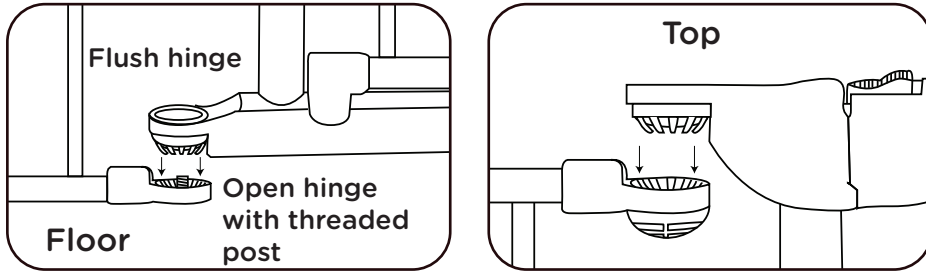


On the hinge side of the Door Section, position a Section with the flush hinge to nest with the open hinge on the door section. Position at the desired angle.



Insert the Connecting Spindle with the silver end toward the top. The bottom of the Connecting Spindle is threaded and will fit onto the threaded post in the lower hinge. Only screw the Connecting Spindle in partially by hand to allow for possible angle adjustments of the gate later without having to unscrew the Connecting Spindle.

## Step 4



Repeat Step 3 on the locking side of the door Section, by sliding the open hinge on the Section in under the flush hinge on the Door Section. Insert Connecting Spindle and only screw in partially.

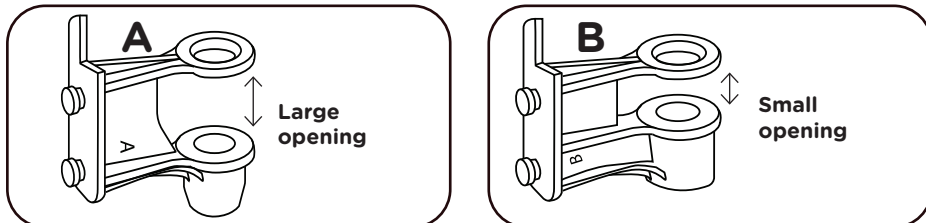
## Step 5

Repeat Step 3 and 4 for any additional Sections needed.

## MOUNTING TO THE WALL

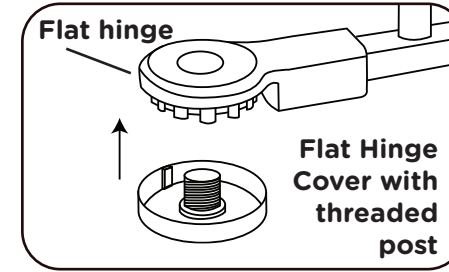
The Construct-A-SafeGate must be secured to a wall, except when used as a free standing playard. Always secure the gate with both the top and bottom Wall Brackets.

## Step 6

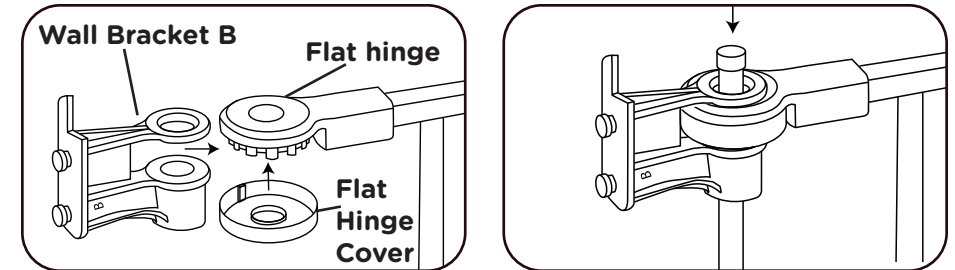


Notice that there are two sets of Wall Brackets. Two with larger spacing (marked A) and two with a smaller spacing (marked B). You will be using the two A's on one side of the gate and the two B's on the other.

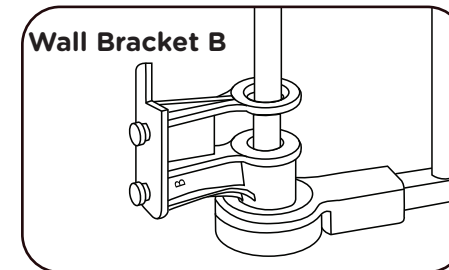
## Step 7



Start with the end of the gate with the “flat” hinges sticking out. Position the Flat Hinge Cover with the threaded post under bottom hinge.

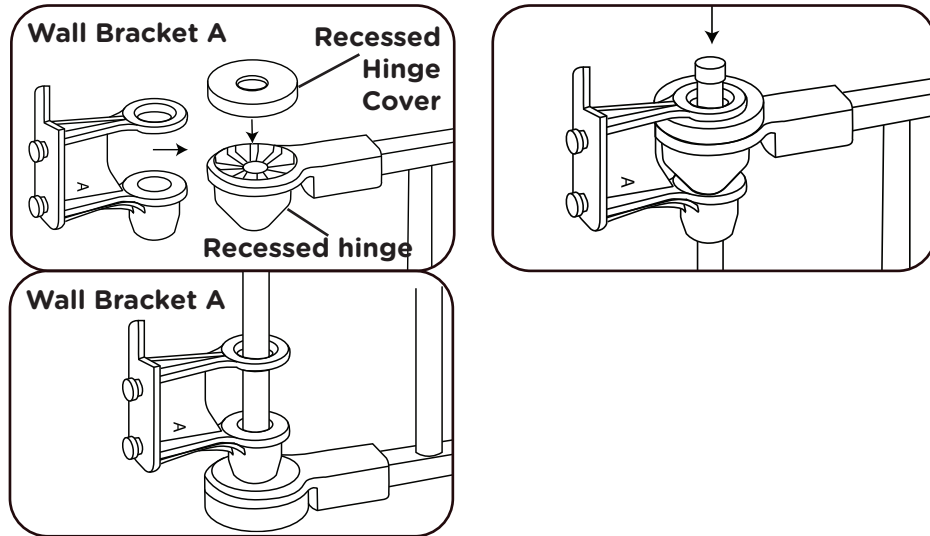


Insert the Flat Hinge Cover on the Top Hinge on the same side of the gate, then slide Wall Bracket B over the top hinge and insert the Connecting Spindle.



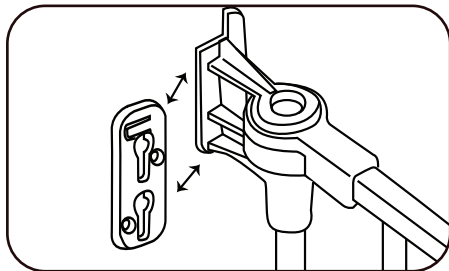
Slide the second Wall Bracket B onto the Connecting Spindle before connecting to and tightening to the Hinge.

## Step 8



For the other end of the gate with the “recessed” hinges, you will use Hinge Bracket A both at the top and bottom. Place the Top Hinge Covers on both the top and bottom hinges. Slide Wall Bracket A over the top hinge and insert Connecting Spindle. Slide the second Wall Bracket A onto the Connecting Spindle with the cone shaped end down.

## Step 9



Attach the Wall Plates to the Wall Brackets by aligning the key slots and slide in until the Wall Place locks into place.

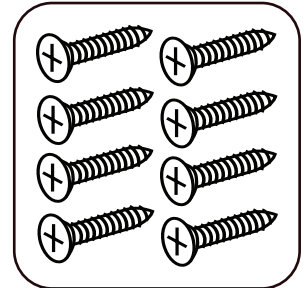
## IMPORTANT:

### REGARDING THE INCLUDED MOUNTING SCREWS!

Before marking where to attach the gate, make sure you have chosen a solid surface for mounting the gate to. The included screws are intended for the following locations.

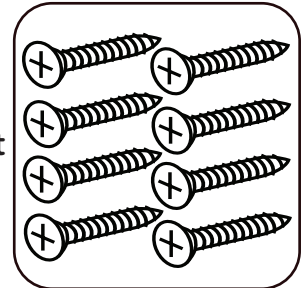
#### Directly into wood

The Short Screws 3/4" (19 mm) are used when mounting directly into wood, for example in a door frame or other framed opening. If installing into hardwood, first drill a pilot hole.



#### Into a stud behind drywall

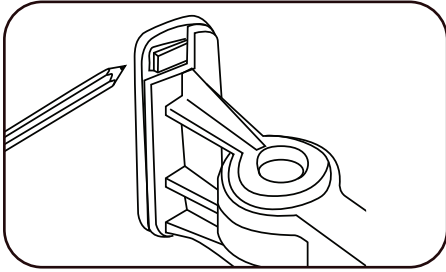
Use a studfinder to locate where there is a stud behind the drywall. Then use the Long Screws 1.5" (38 mm) to mount the gate into the stud.



#### Any other surface

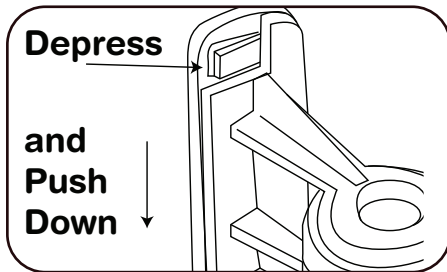
If mounting into drywall, brick or other surface, use only the appropriate hardware for that surface. Consult with a certified child proofer, a handyman or your local hardware store if you are unsure.

### Step 10



Position the gate in the desired position and rotate Wall Brackets to be flush with the wall. Using a pencil carefully mark the position of each Wall Plate. The lower Wall Brackets can be adjusted up or down on the Connecting Spindle to avoid interfering with a baseboard, if present.

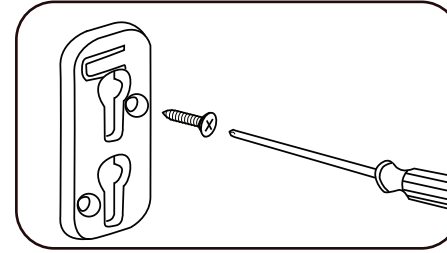
### Step 11



Remove the Wall Plates from the Wall Brackets by depressing the locking tab and then push it down.

Place the Wall Plate inside the markings on the wall with the locking tab at the top and mark the screw holes (they are all identical). After this you can erase the markings for the positioning of the Wall Plates from the wall.

### Step 12



Attach the four Wall Plates, by using the supplied wood screws or other appropriate hardware as needed.

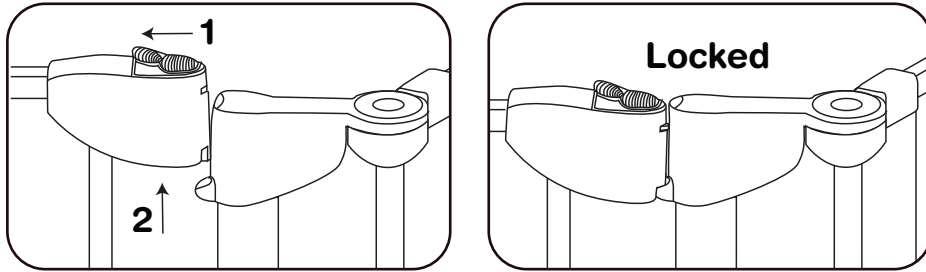
### Step 13

Once you are satisfied with the installation and all angles are correct tighten all Connecting Spindles by hand and secure them.

## FREE STANDING PLAYARD

To assemble as a free standing playard begin by following Steps 1 through 5. You then connect the ends of the enclosure together as instructed.

## GATE OPERATION



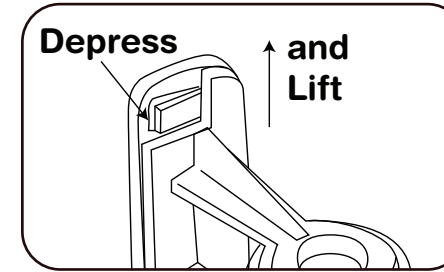
**To open** - Slide locking button back and at the same time lift the door.

**To close** - Position door parallel with frame and push door down to lock.

### **IMPORTANT:**

Never leave the gate unlocked or open as older children may play with the gate causing personal injury or damage to the gate, voiding the manufacturer's warranty.

## REMOVING GATE FROM WALL



To remove the gate from the wall, press the locking tab on the Wall Plates and lift gate up.

Start by releasing the two bottom Wall Brackets, as they can slide up on the tube once released. Then release the top Wall Brackets.





A HIGHER STANDARD OF SAFETY®

Distributed by Regal Lager, Inc.  
Kennesaw, GA 30144 USA  
1-800-593-5522 • [www.QdosSafety.com](http://www.QdosSafety.com)  
[support@qdos.zendesk.com](mailto:support@qdos.zendesk.com)

©2020 Qdos All rights reserved.  
Qdos is a trademark of Regal Lager, Inc.  
Made in China

04/2020