



# Stair Mounting Adapter

## Installation Guide

Installing safety gates in modern homes can be very challenging, especially for stairs.

The Stair Mounting Adapter will allow you to mount gates to most square and round banisters, as well as between wood or wrought iron spindles in stairs or railings, without the need to screw into them. It will create an even and secure surface to help you mount the gate properly.

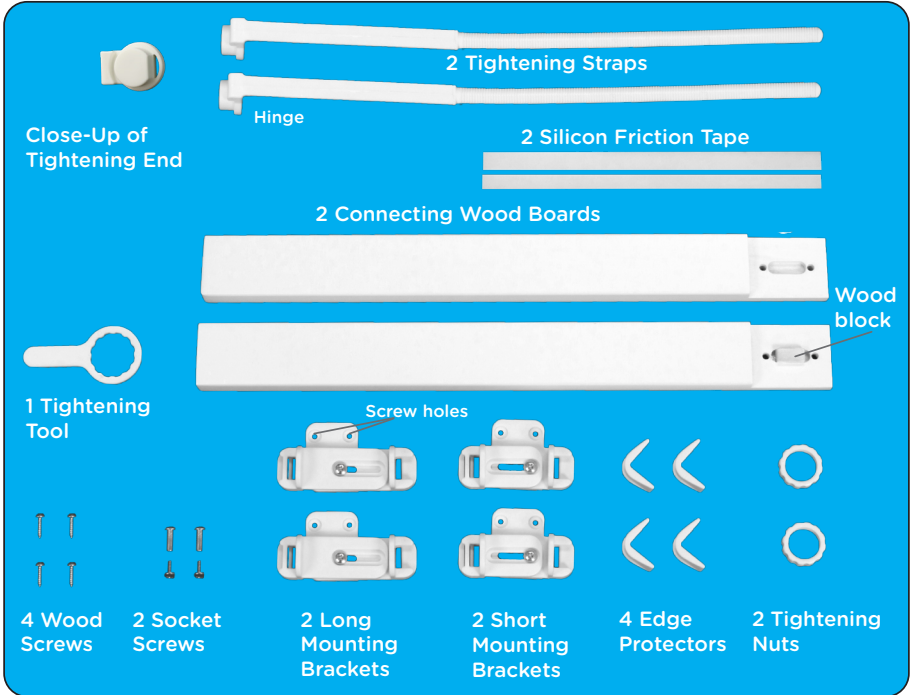
If you have banisters on both sides you will need one Stair Mounting Adapter on each side.

### **Important:**

Qdos wants to keep your children safe and for that we need you to do your part by carefully reading and following the instructions below. Please read through the instructions before starting the installation.

For installation videos and FAQs go to: [QdosSafety.com](https://youtu.be/i5wehUSLj_E)  
[https://youtu.be/i5wehUSLj\\_E](https://youtu.be/i5wehUSLj_E)

# Parts List:



## Double Check Opening Size

Measure the opening and confirm that your gate will fit in the opening, including the Stair Mounting Adapter that will add 1.5" (3.8 cm) to each side where it is used.

## Measure the diameter of your post(s)/banister

### SQUARE post/banister



1.7"-2.6" (44-67 mm)  
Use Short Mounting  
Brackets

2.4"-4.2" (62-107 mm)  
Use Long Mounting  
Brackets

### ROUND post/banister



1.8"-2.6" (45-67 mm)  
Use Short Mounting  
Brackets

2.4"-4.7" (62-120 mm)  
Use Long Mounting  
Brackets

### Across two spindles (measure in between spindles)



2"-2.9" (50-75 mm)  
Use Short Mounting  
Brackets

2.8"-4.5" (71-115 mm)  
Use Long Mounting  
Brackets

# Installation on SQUARE Post/Banister

For Posts 2.4"-4.2" (62 - 107 mm)

## Step 1

Carefully loosen the screws on the two Long Mounting Brackets by using a Phillips screwdriver until it allows the width to be adjusted.



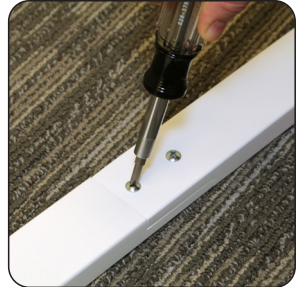
Position against square post and adjust the width until the angled stops are as close to the post as possible.



Tighten the screws.

## Step 2

Use the included Socket Screws and connect the two Wood Boards to create one long board. Make sure the wood block is in place.



## Step 3

Hold one of the Long Mounting Brackets and the long wood board up to the post/banister. Adjust the Mounting Brackets on the back of the board to find one location 0-3" (0-7.6 cm) from the top and one location 2-4" (5-10 cm) from the bottom where the Long Mounting Brackets will fit on a flat surface of the post/banister. Hold each Long Mounting Bracket against board and mark the locations on the "backside" of the long wood board.



#### Step 4

Thread the Mounting Strap through the Long Mounting Bracket with the smooth side of the Mounting Strap towards the nut holding the Long Mounting Bracket together.



#### Step 5

Attach the two Long Mounting Brackets to the back of the long wood board in the marked locations, using the four wood screws.



#### Step 6

Hold the long wood board with the Long Mounting Brackets up to the square post with the wood board facing the gate location. Wrap the Top Tightening Strap around the post and feed the end through the small hole in the Tightening End of the strap.



Pull on the strap and attach the Tightening Nut that will thread on the threads in the strap. **DO NOT TIGHTEN YET.**

Repeat for the bottom Mounting Bracket and Tightening Strap.



Align the hinge of the Tightening Strap with the corner of the post by sliding it through the Long Mounting Brackets.



Insert Edge Protectors as needed to protect exposed post corners from the strap rubbing on them.



Hand tighten the Tightening Nut as much as possible, then use the Tightening Tool to tighten the strap around the post.



Tighten the strap firmly and make sure the Stair Mounting Adapter is secure.



### Step 8

Once the installation is secure and the strap is very tight, cut the excess strap as close as possible to the Tightening Nut using a sturdy pair of scissors.



After cutting, use the Tightening Tool to loosen the Tightening Nut approximately 1-2 turns until the cut end of the strap is protected inside the Tightening Nut.



Recheck the security of the Stair Mounting Kit.

Repeat for Bottom Mounting Bracket.

### Step 9

Install gate on the Stair Mounting Adapter, following the gate instructions.

If your square post/banister is less than 2.4" (67 mm)



wide, use the two short Mounting Brackets.

## Installation on **ROUND** Post/Banister

### Step 1

Depending on the thickness of the round post/banister carefully loosen the screws on either two Long or Short Mounting Brackets, or possibly one of each, using a Philips screwdriver until it allows the width to be adjusted

Adjust the width of the chosen Mounting Brackets, until the angled stops fit against the round post.

Tighten the screws.

### Step 2

Use the included Socket Screws and connect the two Wood Boards to create one long board. Make sure the wood block is in place.

### Step 3

Hold one of the Mounting Brackets and the long wood board up to the round banister. Find one location towards the top and one location towards the bottom where the round post/banister is evenly thick for a vertical installation.

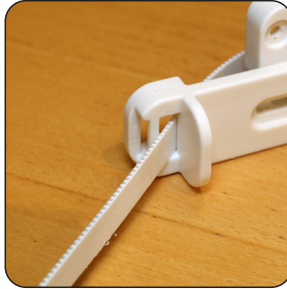




Mark the top and bottom Mounting Bracket locations on the “backside” of the long wood board.

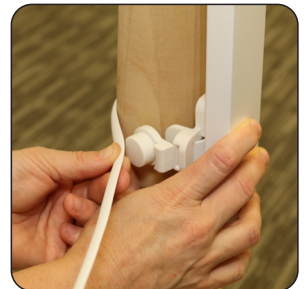
**Step 4**

Thread the Mounting Strap through the Mounting Bracket with the smooth side of the Mounting Strap covering the nut that holds the Mounting Bracket together.



**Step 5**

Attach the two Mounting Brackets to the long wood board in the marked positions with the four wood screws.



**Step 6**

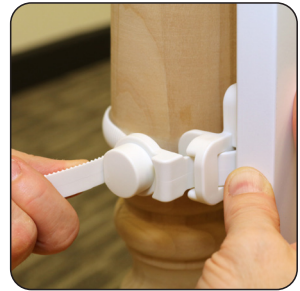
Hold the long wood board with the Mounting Brackets up to the round banister with the wood board facing the gate location and wrap the

Tightening Straps around the banister. Pull each strap all the way through the Mounting Bracket until the hinge in the Tightening End is fed through all the way to the Mounting Bracket.



Before feeding the end of the straps through the small hole in the Tightening End, measure where the inside of the straps will come in contact with the round post. Cut a corresponding length piece of the Silicone Friction Tape and attach to the inside of the straps.

**IMPORTANT: The Silicone Friction Tape is absolutely necessary to hold the Stair Mounting Adapter securely in place on round banisters.**



### Step 7

Feed the end of the Mounting Strap through the small hole in the Tightening End of the strap. Pull on the strap and attach the Tightening Nut that will thread onto the threads on the strap.

Repeat with the bottom strap.



### Step 8

Hand tighten both Tightening Nuts while ensuring that the long wood board is vertical.

Hand tighten as much as possible and then use the Tightening Tool.

Tighten the straps firmly to insure that the Stair Mounting Adapter does not move.

### **Step 9**

Once the installation is secure and the straps are very tight, cut the remaining strap as close as possible to the Tightening Nuts using a sturdy pair of scissors.

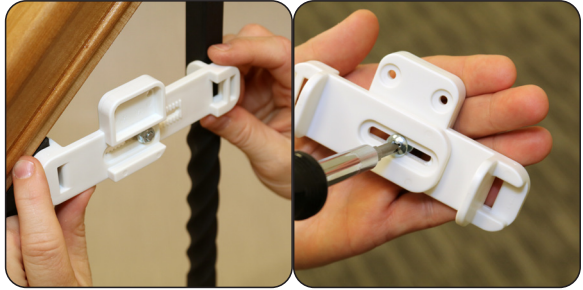


After cutting, use the Tightening Tool to loosen Tightening Nuts until the cut end of the straps are protected inside the Tightening Nut. Recheck the security of the Stair Mounting Adapter.

## Step 10

Install gate on the Stair Mounting Adapter, following the gate instructions.

## Installation In Between Two Spindles



## Step 1

Carefully loosen the screws on the two Long Mounting Brackets by using a Phillips screwdriver until it allows the width to be adjusted.



Adjust the width of the two Long Mounting Brackets outward until the angled stops fit tightly on the inside in between the two spindles.

Tighten the screws.



## Step 2

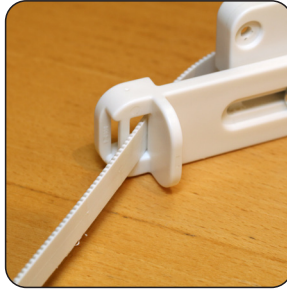
Use the included Socket Screws and connect the two Wood Boards to create one long board. Make sure the wood block is in place.



## Step 3

Hold one of the Long Mounting Brackets and the long wood board up to the spindles. Position the

top Bracket about 2" (5 cm) below the handrail on the "lower" spindle and the bottom Bracket 2-4" (5-10 cm) above the stair. Mark the Mounting Bracket locations on the "backside" of the long wood board.



#### **Step 4**

Thread the Mounting Strap through the Long Mounting Bracket with smooth side of the Mounting Strap towards the nut that holds the Long Mounting Bracket together.

#### **Step 5**

Attach the two Long Mounting Brackets to the back of the long wood board in the marked locations, using the four wood screws.



#### **Step 6**

Hold the long wood board with the Long Mounting Brackets up to the spindles with the wood facing the gate location and wrap the top



**Tightening Strap around the two spindles. Feed the end through the small hole in the Tightening End. Pull on the strap and attach the Tightening Nut that will thread on the strap. DO NOT TIGHTEN YET.**



**Repeat for the bottom Tightening Strap.**

**Adjust the position of the Tightening Ends by sliding it through the Long Mounting Brackets. If you have a square spindle, place the hinge in the tightening end around a corner.**



### **Step 7**

**Insert Edge Protectors as needed to protect exposed post corners from the strap.**

**Hand tighten both Tightening Nuts as much as possible, then use the Tightening Tool to tighten the straps around the spindles.**



**Tighten the strap firmly and make sure the Mounting Adapter is secure.**

**DO NOT OVER-TIGHTEN AS THIS MIGHT CAUSE THE SPINDLES TO BEND OR BREAK!**



### **Step 8**

Once the installation is secure and the straps are very tight, cut the remaining straps as close as possible to the Tightening Nuts using a sturdy pair of scissors.



After cutting, use the Tightening Tool to loosen the Tightening Nut until the cut ends of the straps are protected behind the Tightening Nuts.



Recheck the security of the Stair Mounting Adapter.

### **Step 9**

Install gate on the Stair Mounting Adapter, following the gate instructions.





**Distributed by Regal Lager, Inc.  
Kennesaw, GA 30144 USA  
1-800-593-5522 • [www.QdosSafety.com](http://www.QdosSafety.com)  
[support@qdos.zendesk.com](mailto:support@qdos.zendesk.com)**

**©2022 Qdos All rights reserved.  
Qdos is a trademark of Regal Lager, Inc.  
Made in China**