



# Adhesive Double Door Lock

## Easy 3-Step Installation Guide

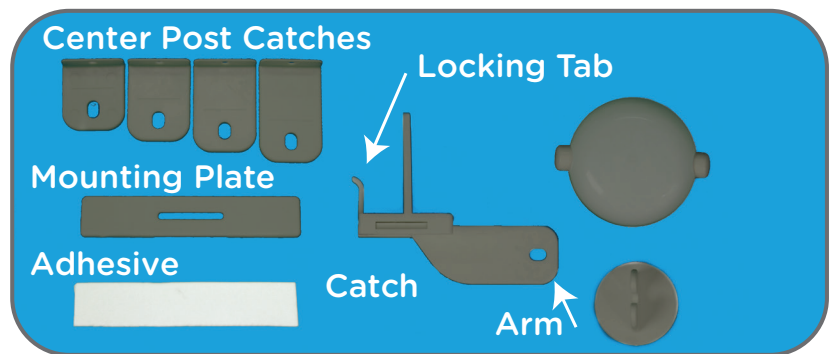
Before removing the adhesive protective liner, do a dry run and test each step to make sure the installation will work. The SecureHold adhesive is meant to be used once only and cannot be repositioned if done incorrectly.

### Important:

Qdos wants to keep your children safe and for that we need you to do your part by carefully reading and following the instructions below.

For installation videos and FAQ go to: [QdosSafety.com](http://QdosSafety.com)

### Parts List:



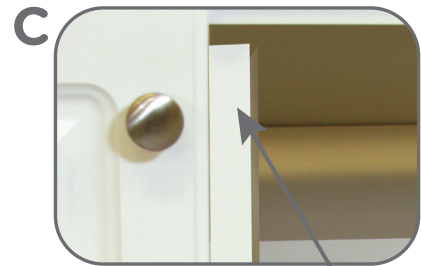
## Step 1 - Determine what cabinet type you have



A - Completely open.  
See step A2-A3 below.



B - With center post.  
See step B2-B3 below.



C - If one door has a "lip" that goes behind the other door. **The Double Door Lock will unfortunately not work.** For these cabinets use Qdos Magnet Lock or SureCatch Latch.

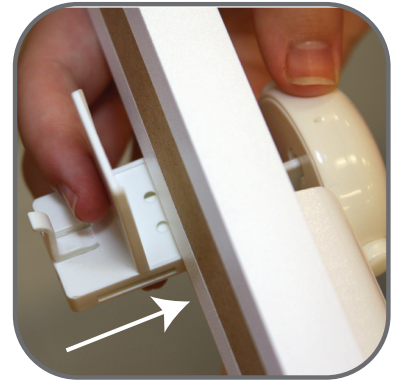
## Step A2 - Positioning the Catch



- Push Locking Cap onto Arm until it locks.
- Open right door and keep left door closed.



- Remove protective liner on adhesive.
- Slide Locking Cap along left door edge up under frame.

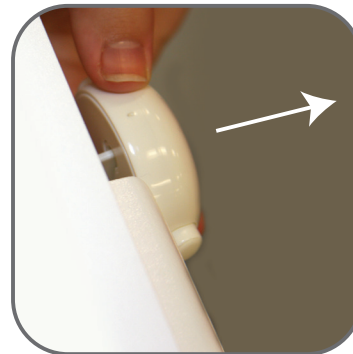


- Pull Catch forward until it sticks to the back of the cabinet frame.
- Hold firm for 30 seconds

## Step A3 - Adjusting Arm Length



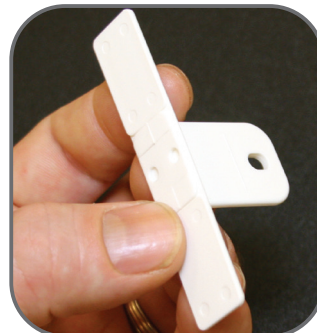
- Push locking Tab on back of catch to allow the arm to slide.
- Slide Arm back by pushing on the Locking Cap until it touches the door.



- Release Locking Tab and pull Locking Cap forward until Locking Tab locks Arm into position.

## Step B2 - Choose Correct Catch

Open right door and keep left door closed. Hold Center Post Catches against door edge to find the one with the marking equal to or slightly bigger than door.



Slide Catch into the Mounting Plate and attach adhesive to the back of the Mounting Plate

## Step B3 - Position the Mounting Plate on the Frame



Open left door.  
Remove the second protective liner.  
Hold Mounting Plate against open left door edge at desired height.



Close left door until Mounting Plate sticks on frame.  
Hold firm for 30 seconds.  
(Leave for 24 hours to set for maximum adhesion.)



Push Locking Cap onto the Center Post Catch.

## Storage Post for Locking Cap



Position the Storage Post in a desired location out of reach of children. We suggest putting it on the inside of the door. Use the post for storage of the Locking Cap when not in use.

To mount the Storage Post, peel off protective liner on the adhesive then press firmly into place for 30 seconds.

## To Permanently Remove Storage Post



Use a rounded knife and carefully pry behind an edge of the Storage Post until the tape tears. For remaining tape residue, use a finger to simply rub it away. If any residue still remains, use a cleaner that will not damage the surface you are removing the residue from. There is no way to test all possible surfaces SecureHold Adhesive will be applied to; please use caution when removing to avoid damaging the surface. SecureHold adhesive may cause damage to some surfaces.

## **⚠ WARNING**

•ADULT INSTALLATION REQUIRED •Do not use this product to protect toxic and dangerous substances, or sharp edged or pointed objects. Such products should always be placed high up and preferably made completely inaccessible to children. •CAUTION: This product is only a deterrent. It's not a substitute for proper adult supervision. To keep product effective as long as possible, avoid letting children see how you operate it. Discontinue use when the child is able to defeat it.

# Qdos™

A HIGHER STANDARD OF SAFETY™

3350 Town Point Drive, Suite 100  
Kennesaw, GA 30144 USA

1-800-593-5522 • [www.QdosSafety.com](http://www.QdosSafety.com)

©2016 Regal Lager, Inc. All rights reserved.

Made to Qdos Standards in China.