



Stair Mounting Kit

Installation Guide

Installing safety gates in modern homes can be very challenging, especially for stairs.

The Stair Mounting Kit will allow you to mount gates to most square and round banisters, as well as between wood or wrought iron spindles in stairs or railings, without the need to screw into them. It will create an even and secure surface to help you mount the gate properly.

If you have banisters on both sides you will need one Stair Mounting Kit on each side.

Important:

Qdos wants to keep your children safe and for that we need you to do your part by carefully reading and following the instructions below. Please read through the instructions before starting the installation.

For installation videos and FAQs go to: [QdosSafety.com](https://www.QdosSafety.com)

Use Locations:

Square post/banister up to 4" x 4"
(Go to page 4)



Round banister post up to 5" in diameter (Go to page 8)



Between two square or round spindles (Go to page 11)



Parts List:

Close-Up of Tightening End

90° corner

2 Tightening Straps

2 Silicon Friction Tape

2 Connecting Wood Boards

Wood block

1 Tightening Tool

Screw holes

4 Wood Screws

2 Connecting Screws

2 Long Mounting Brackets

2 Short Mounting Brackets

4 Edge Protectors

2 Tightening Nuts

Opening Size

Measure the opening and confirm that your gate will fit in the opening, including the Stair Mounting Kit that will add 1.5" to each side where it is used.

Installation on Square Post/Banister

Step 1

Carefully loosen the screws and nuts on the two Long Mounting Brackets by using a Phillips screwdriver until the width can be adjusted.



Adjust the width until the angled stops are as close to the post as possible.



Tighten the screws and nuts.

Step 2

Use the included Connecting Screws and connect the two Wood Boards to create one long board.



Step 3

Hold one of the Long Mounting Brackets and the long wood board up to the banister. Slide the Mounting Bracket on the back of the board to find one location 0-3" from the top and one location 2-4" from the bottom where the Long Mounting Bracket will fit on a flat surface of the banister. Mark the Mounting Bracket screw hole locations on the "backside" of the long wood board.



Step 4

Thread the Mounting Strap through the Long Mounting Bracket with the smooth side of the Mounting Strap covering the nut holding the Long Mounting Bracket together.



Step 5

Attach the two Long Mounting Brackets to the long wood board in the marked locations with the four wood screws.



Step 6

Hold the long wood board with the Long Mounting Brackets up to the square post with the wood board facing the gate location. Wrap the Top Tightening Strap around the post and feed the end through the small hole in the Tightening End of the strap.



Pull on the strap and attach the Tightening Nut that will thread on the threads in the strap. DO NOT TIGHTEN YET.



Repeat for the bottom Mounting Bracket and Tightening Strap.

Align the 90 degree corner of the Tightening Strap with the corner of the post by sliding it through the Long Mounting Brackets.



Insert Edge Protectors as needed to protect exposed post corners from the strap rubbing on them.



Hand tighten the Tightening Nut as much as possible, then use the Tightening Tool to tighten the kit onto the post.



Tighten the strap firmly and make sure the Stair Mounting Kit is secure.



Step 8

Once the installation is secure and the strap is very tight, cut the excess strap as close as possible to the Tightening Nut using a sturdy pair of scissors.



After cutting, use the Tightening Tool to loosen the Tightening Nut approximately 1-2 turns until the end of the strap is protected inside the Tightening Nut.



Recheck the security of the Stair Mounting Kit.

Step 9

Install gate on the Stair Mounting Kit, following the gate instructions.

Installation on Round Banister Post

Step 1

Depending on the thickness of the banister post carefully loosen the screws and nuts on either the two Long or Short Mounting Brackets, using a Philips screwdriver until the width can be adjusted



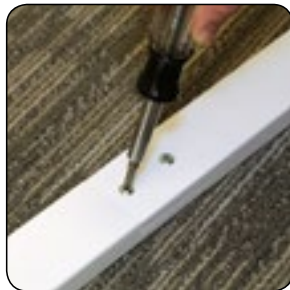
Adjust the width of the chosen Mounting Brackets, until the angled stops fit against the round post.



Tighten the screws and nut.

Step 2

Use the included Connecting Screws and connect the two Wood Boards to create one long board.



Step 3

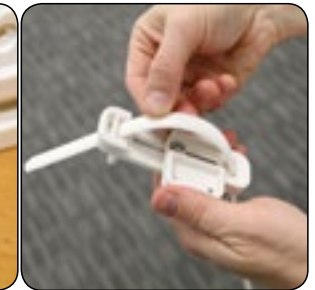
Hold one of the Mounting Brackets and the long wood board up to the round banister. Find one location towards the bottom and one location towards the top where the round banister is evenly thick for a vertical installation. Mark the top and bottom



Mounting Bracket screw hole locations on the "Backside" of the long wood board.

Step 4

Thread the Mounting Strap through the Mounting Bracket with the smooth side of the Mounting Strap covering the nut that holds the Mounting Bracket together.



Step 5

Attach the two Mounting Brackets to the long wood board in the marked positions with the four wood screws.



Step 6

Hold the long wood board with the Mounting Brackets up to the round banister with the wood board facing the gate location and wrap the Tightening Straps around the banister. Pull each strap all the way through the Mounting Bracket until the 90 degree corner in the Tightening End is all the way at the Mounting Bracket.



Before feeding the end of the straps through the small hole in the Tightening End, measure where the inside of the straps will come in contact with the round post. Cut a corresponding length piece of the Silicone Friction Tape and attach to the inside of the straps.



IMPORTANT: The Silicone Friction Tape is absolutely necessary to hold the Stair Mounting Kit securely in place for round banisters.

Step 7

Feed the end of the Mounting Strap through the small hole in the Tightening End of the strap. Pull on the strap and attach the Tightening Nut that will thread onto the threads on the strap.



Repeat with the bottom strap.

Step 8

Hand tighten both Tightening Nuts while ensuring that the long wood board is vertical.

Hand tighten as much as possible and then use the Tightening Tool. Tighten the straps firmly to insure that the Stair Mounting Kit does not move.



Step 9

Once the installation is secure and the strap is very tight, cut the remaining strap as close as possible to the Tightening Nut using a sturdy pair of scissors.



After cutting, use the Tightening Tool to loosen Tightening Nut until the end of the strap is protected inside the Tightening Nut and then recheck the security of the Stair Mounting Kit.



Step 10

Install gate on the Stair Mounting Kit, following the gate instructions.

Installation Between Two Spindles

Step 1

Carefully loosen the screws and nuts on the two Long Mounting Brackets by using a Phillips screwdriver until the width can be adjusted.



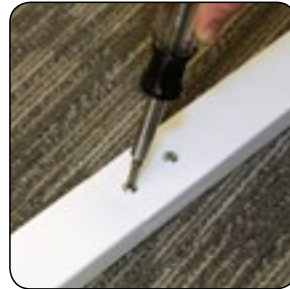
Adjust the width of the two Long Mounting Brackets outward until the angled stops fit tightly on the inside in between the two spindles.



Tighten the screws and nuts.

Step 2

Use the included Connecting Screws and connect the two Wood Boards to create one long board.



Step 3

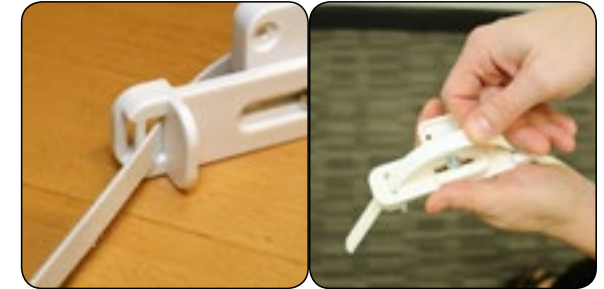
Hold one of the Long Mounting Brackets and the long wood board up to the spindles. Position the top Bracket about 2" below the handrail on the lower spindle and the bottom Bracket 2-4" above the stair. Mark the Mounting Bracket screw hole



locations on the "backside" of the long wood board.

Step 4

Thread the Mounting Strap through the Long Mounting Bracket with smooth side of the Mounting Strap covering the nut that holds the Long Mounting Bracket together.



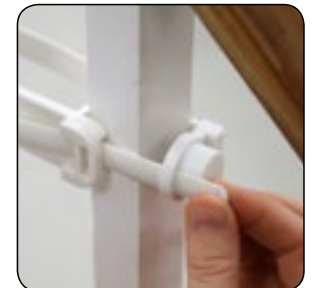
Step 5

Attach the two Long Mounting Brackets to the long wood board in the marked locations with the four wood screws.



Step 6

Hold the long wood board with the Long Mounting Brackets up to the spindles with the wood facing the gate locations and wrap the top Tightening Strap around the two spindles. Feed the end through the small hole in the Tightening End.



Pull on the strap and attach the Tightening Nut that will thread on the strap. DO NOT TIGHTEN YET.

Repeat for the bottom Tightening Strap.

Adjust the position of the Tightening Ends by sliding it through the Long Mounting Brackets. If you have a square spindle, place the 90 degree corner in the tightening end around a corner.

Step 7

Insert Edge Protectors as needed to protect exposed post corners from the strap.

Hand tighten the Tightening Nut as much as possible, then use the Tightening Tool to snug the kit onto the post.

Tighten the strap firmly and make sure the Mounting Kit is secure. Do not over-tighten as this might cause the spindles to bend or break!



Step 8

Once the installation is secure and the strap is very tight, cut the remaining strap as close as possible to the Tightening Nut using a sturdy pair of scissors.



After cutting, use the Tightening Tool to loosen the Tightening Nut until the end of the strap is protected behind the Tightening Nut.



Recheck the security of the Stair Mounting Kit.

Step 9

Install gate on the Stair Mounting Kit, following the gate instructions.



3350 Town Point Drive, Suite 100
Kennesaw, GA 30144 USA
1-800-593-5522 • www.QdosSafety.com
©2017 Regal Lager, Inc. All rights reserved.
Made to Qdos Standards in China.

02/2017