

## Easy 3-Step Installation Guide

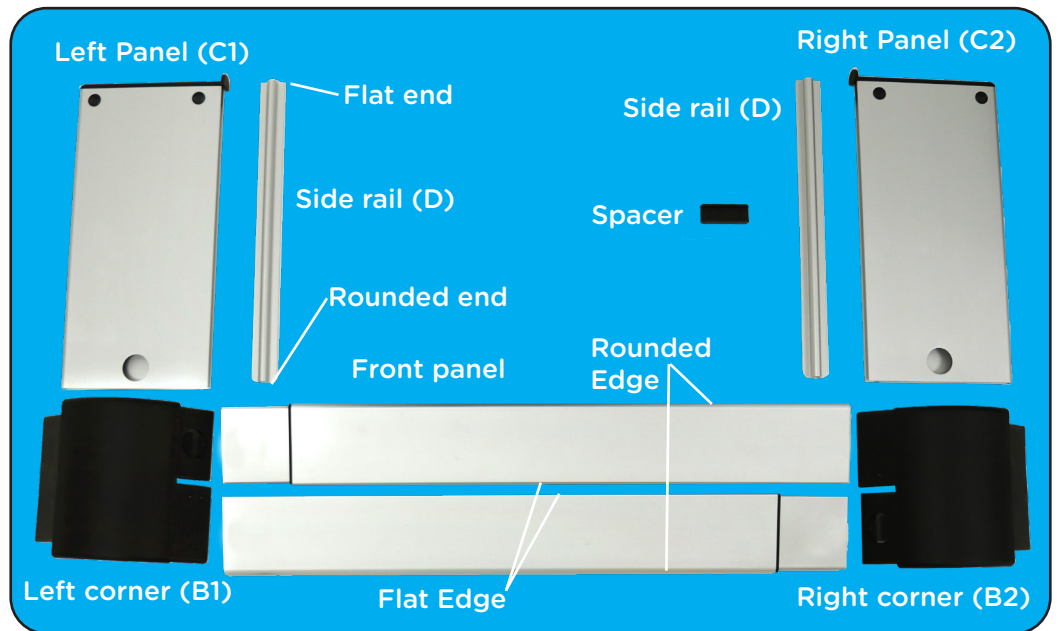
Before removing the protective liner from the adhesive, do a dry run and test each step to make sure the installation will work, as you might not be able to reposition the SecureHold adhesive after it sticks.

### Important:

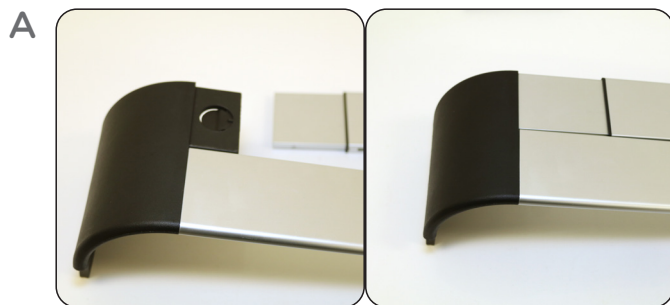
Qdos wants to keep your children safe and for that we need you to do your part by carefully reading and following the instructions below.

For installation videos and FAQs go to: [QdosSafety.com](http://QdosSafety.com)

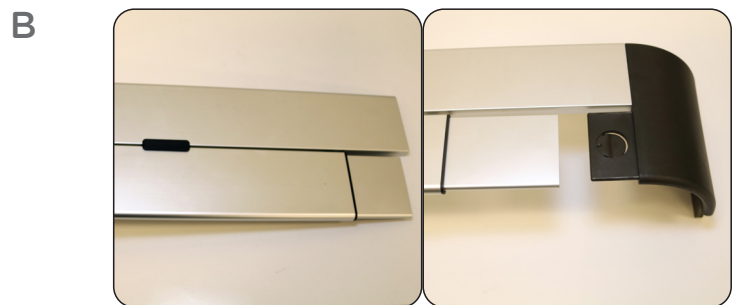
## Parts List:



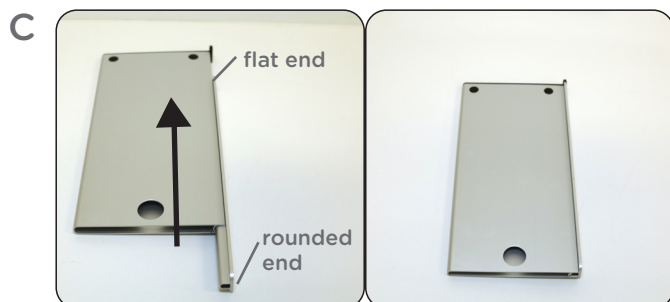
## Step 1 - Assembly



- First attach the wider end of a Front Panel to the bottom of the Left Corner (B1). Ensure rounded edge of this front panel is facing down and push until it locks into place.
- Second attach the narrower end of the other Front Panel to the top of the Left Corner (B1). Ensure rounded edge is facing up and push until it locks into place.



- If your stove is 30" or wider, slide the Spacer in between the long front panels.
- Then attach the two Front Panels to the Right Corner (B2) and push until they lock into place



- Next slide the Side Rails (C) in on the underside of the Side Panels, with the flat ends first that match up to the plastic end caps of the side panels.



- Finally attach left Side Panel (C1) to the Left Corner (B1). With the hole on the inside push until it locks into place. Repeat for right Side Panel (C2) to the Right Corner (B2).

**IMPORTANT INFORMATION FOR GAS STOVES AND COOKTOPS!** When cooking with gas, a lot of heat from the gas burner radiates around the pot or pan, especially when turned to high. This radiating heat and the proximity of the pot or pan to the Stove Guard can cause the Stove Guard to get hot to the touch. Due to this radiating heat from the gas, **always keep the pot or pan at least 3" (7.5 cm) from the inside of the Stove Guard**, or use one of the rear burners when cooking with gas. Electric stove tops or cooktops don't radiate heat in the same manner and here we recommend to keep the pot or pan 1" (2.5 cm) from the inside of the Stove Guard. **Please keep this in mind when installing the Stove Guard.**

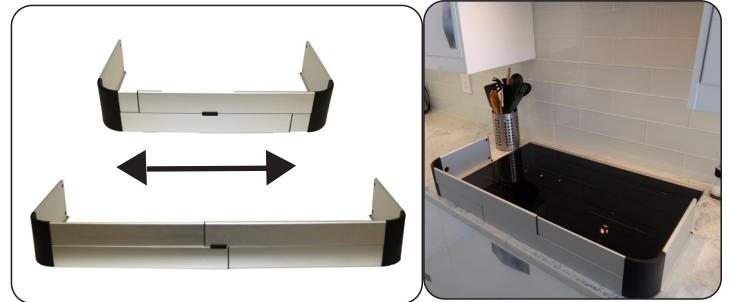
## Step 2 - Positioning: Stovetop



- Adjust the width by pulling on the corners until the Side Rails hit a smooth surface close to the edge of the stove top.
- Adjust the depth so the front is supported by the stove top as well.

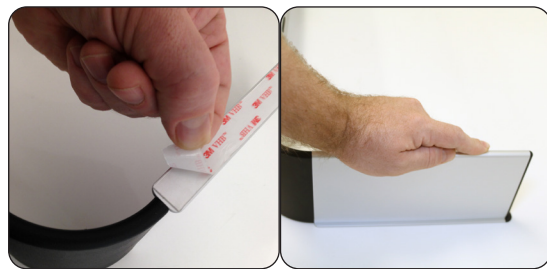
OR

## Cooktop



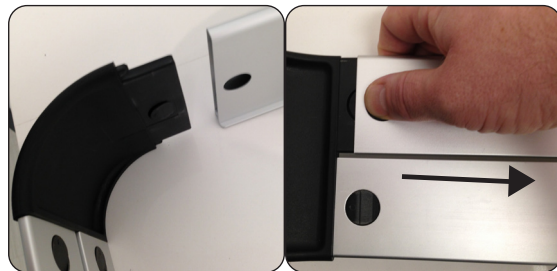
- Adjust the width by pulling on the corners so the Side Rails hit the countertop beside the cook top.
- Adjust the depth to ensure the front is supported by the countertop as well.

## Step 3 - Installation



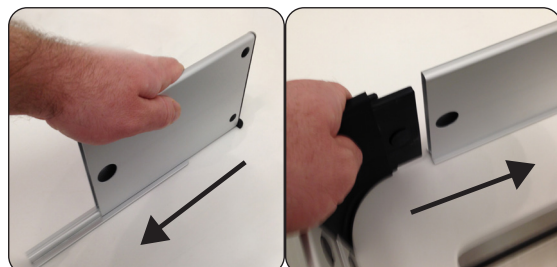
- Thoroughly clean the area the side rails will be adhered to with rubbing alcohol to remove any grease and then dry surface.
- Set the assembled Stove Guard in place making sure it is sized for width and positioned correctly for depth, as you might not be able to reposition the SecureHold adhesive after it sticks.
- Remove protective liners from the adhesive tape on both Side Rails.
- Attach the Stove Guard in the desired position and press firmly on the side panels for 30 seconds.

## Temporary Removal for Cleaning



- Push the tabs on the inside of the side panels until the corners release and remove front.
- Push each of the tabs on the inside off both front panels to release from the corners.
- Finally slide the side panels forward of the rails.
- **We recommend that you hand wash all parts. If using a dishwasher, place all parts on the TOP RACK ONLY.**

## Reassembly



**Note: Some dishwasher detergents are harsh and may cause the aluminum to discolor over time.**

- Slide the side panels onto the rails with the holes on the inside towards stove/cooktop.
- Connect the front panels to the corners
- Push the corners into the side panels until they lock into place.

## Complete Removal



- Use a rounded knife to carefully lift under the Side Rails until they come off.
- For remaining tape residue, use a finger to simply rub it away. If any residue still remains, use a cleaner that will not damage the surface you are removing the residue from. There is no way to test all possible surfaces SecureHold Adhesive will be applied to; please use caution when removing to avoid damaging the surface. SecureHold adhesive may cause damage to some surfaces.